



Membership to Idaho Museum of Mining and Geology

You may also join on-line at:
www.idahomuseum.org

Your membership helps us fund our programs, museum improvements and includes free field trip and shop discount.

- Family**, \$45 (at same address)
1 Free Field Trip/yr for 4
- Individual**, \$25
1 Free Field Trip/yr
- Associate**, \$15 (Does not include Shop discount, free field trip or voting privileges)

Memberships paid from October thru December will be credited to the following year.

Name (s): _____

Address: _____

City/State/Zip _____

E-mail: _____

Home Phone: _____

Cell Phone: _____

I'm interested in volunteer opportunities:
Yes No

You may share my name/e-mail address with other IMMIG members: Yes No

I am giving a donation of \$_____ to help.

Make your tax deductible check out to: **IMMG.**

Total enclosed \$_____.

- Check
- Cash
- Credit Card

Address Correction Requested
Idaho Museum of Mining and Geology
2455 Old Penitentiary Rd
Boise, Idaho 83712-8254

Idaho Museum of Mining and Geology

- Museum Displays
- Programs & Activities
- Gift Shop
- Membership



Hours:
Open April through October
Wednesday through Sunday
Noon — 5 PM

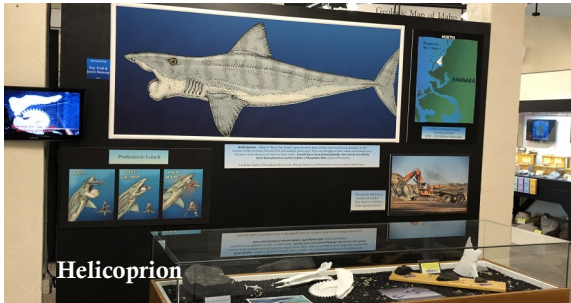
FREE Admission
Donations are encouraged.

2455 Old Penitentiary Rd.
Boise, Idaho 83712
contact.us@idahomuseum.org
www.idahomuseum.org

Tel: 208-368-9876

Mission

...to access, develop, and maintain exhibits and collections pertaining to mining and geology in Idaho, and to use the Museum and its contents to promote education and understanding of mining, geology, and the related earth sciences.



History

The Idaho Museum of Mining and Geology (IMMG) was founded as a non-profit 501 (C)3 in 1989 and moved into the Trustee Dorm of the Old Penitentiary in 1992. Since then it has given thousands of visitors a peek into the fascinating geologic and mining history of Idaho. The museum is run primarily by volunteers.

Programs and Activities

The IMMG offers affordable activities for all, including:

Field trips to areas in Idaho, including one and two-day trips led by well-known geologists, miners, and fossil enthusiasts.

Hillside Geo-hikes for children and adults.

Special Days at the museum with events and a free mineral for each child.

Rock Party for families in September.

Displays

The newly updated 2300 sq. ft. museum includes an historic mining camp, lode and placer mining equipment, an historic mining elevator, a hand-held microscope, rocks and minerals from Idaho and the northwest - including beautiful polished stones from Owyhee County, a black-light exhibit, petrified wood, fossils, a seismograph that is constantly recording earthquakes from around the world, and our **NEW** Helicoprion and Meteorites displays.

Gift Shop

The museum Gift Shop will dazzle you with beautiful polished stones, sliced agate, obsidian arrowheads, shark teeth fossils, jewelry, books, meteorite pieces, rock picks, gold panning equipment, trilobites, and more. You'll also find raw Idaho rocks and minerals of all sizes. Young collectors will love the rock box with ten specimens. All ages will appreciate prices starting as low as 50 cents.

We take credit cards and cash for purchases. Shopping in the Gift Shop helps support the museum.



We need your support to fulfill our mission and expand our services.

Become a museum member

Members get reduced prices on program fees and events, as well as a 20% discount in the Gift Shop. Yearly dues help support exhibit upgrades as well as museum events.

Make a financial contribution

Cash gifts help fund the operation and maintenance of the museum, and help us develop new exhibits, events or classes.

Volunteer

Volunteers make a difference every day at the IMMG. They serve as greeters, tour leaders, assist with exhibits, classes and events and work in the Gift Shop

