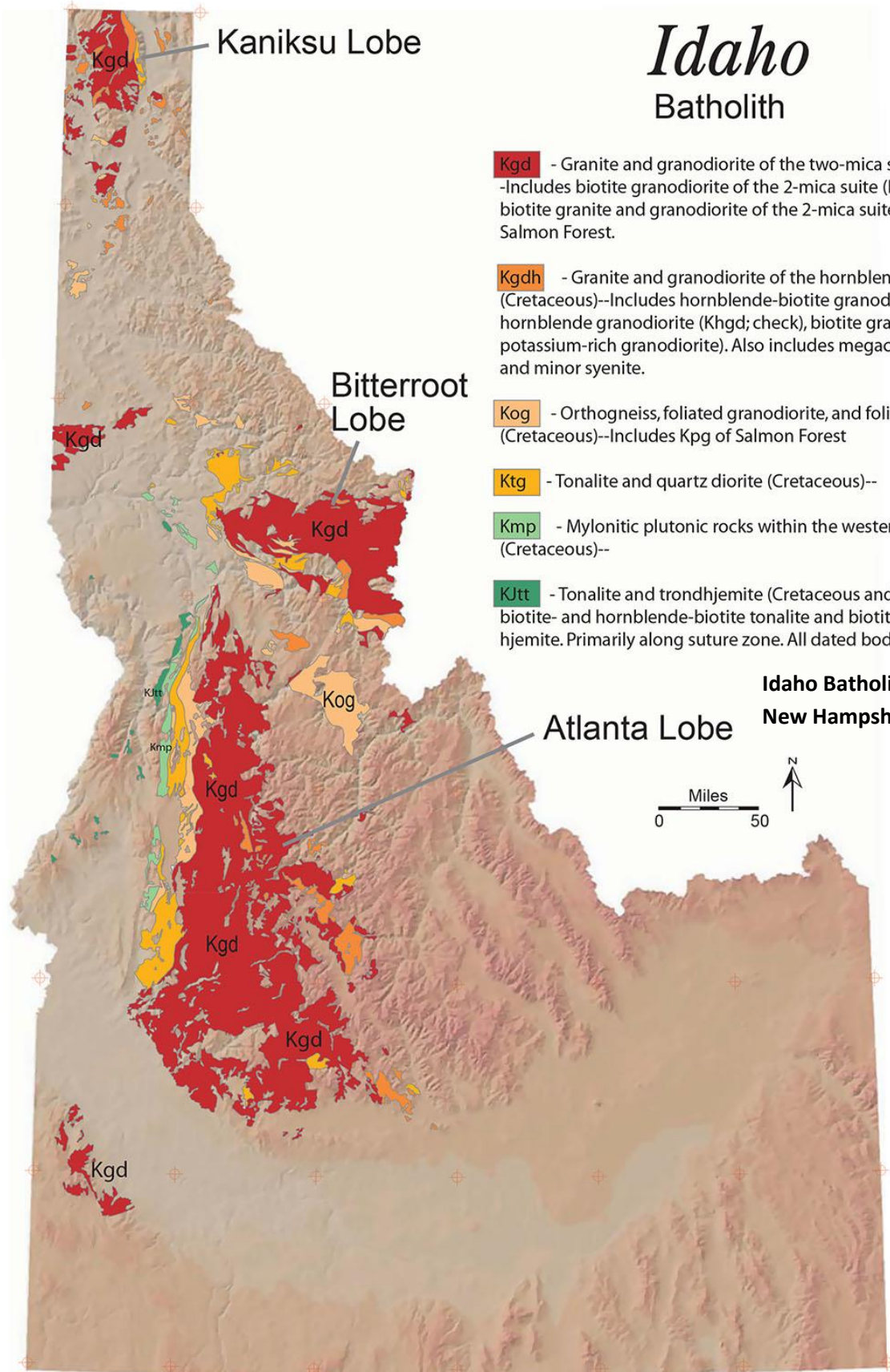


Idaho Batholith Granite

Idaho Batholith



Kgd - Granite and granodiorite of the two-mica suite (Cretaceous)--Includes biotite granodiorite of the 2-mica suite (Kgd) and muscovite-biotite granite and granodiorite of the 2-mica suite (Kmg); also Kgd of Salmon Forest.

Kgdh - Granite and granodiorite of the hornblende-biotite suite (Cretaceous)--Includes hornblende-biotite granodiorite (Khbgd), hornblende granodiorite (Khgd; check), biotite granodiorite (Kgb), and potassium-rich granodiorite). Also includes megacrystic granodiorite and minor syenite.

Kog - Orthogneiss, foliated granodiorite, and foliated granite (Cretaceous)--Includes Kpg of Salmon Forest

Ktg - Tonalite and quartz diorite (Cretaceous)--

Kmp - Mylonitic plutonic rocks within the western Idaho suture zone (Cretaceous)--

KJtt - Tonalite and trondhjemite (Cretaceous and Jurassic?)--Includes biotite- and hornblende-biotite tonalite and biotite-muscovite trondhjemite. Primarily along suture zone. All dated bodies are Cretaceous.

Idaho Batholith = 9,700 mi²
New Hampshire = 9,349 mi²

